



Pflanzen Sachsen- Anhalts

R. & E. Willing



Asteraceae – Cichorieae A - H

Arnoseris

Arnoseris minima

Chondrilla

Chondrilla juncea L.

Cichorium

Cichorium intybus L.

Crepis

Crepis biennis L.

Crepis capillaris

Crepis foetida L. subsp. *foetida*

Crepis tectorum L.

Hypochaeris

Hypochaeris glabra L.

Hypochaeris radicata L.

Stand 28.1.2021



Arnoseris minima



W Mosigkau, TK 4138/4/4/3, 51°48'34"N / 12°07'32"E, 14.7.2014; 29.067 D



Arnosotis minima

W Mosigkau, TK 4138/4/4/3, 51°48'34"N / 12°07'32"E, 14.7.2014; 29.067 D



Chondrilla juncea L.



Coswig, 4140/223, 51°52'39"N/12°28'14"E, 11.07.



Chondrilla juncea

N Streetz, TK 4039/3/2/1, 51°56'25"N, 12°13'38"E, 26.8.13



Chondrilla juncea

NW Jüdenberg, TK 4240/1/4/4, 51°45'30"N, 12°24'24"E, 31.07.2015; 29.917 D



Cichorium intybus

W Vockerode, TK 4140/3/1/1, 51°50'50"N, 12°19'58"E, 20.07.2015



W Dessau-Alten, TK 4139/3/3/1, 51°48'50"N, 12°10'45"E, 06.08.2015



Cichorium intybus

O Roßlau, TK 4139/2/1/1, 51°53'22"N, 12°15'44"E, 12.8.13

LK Anhalt Bitterfeld, Raguhn, 51°42'40"N, 12°17'01"E, 29.7.2016



Crepis biennis

O Lingenau, TK 4239/1/4/3, 51°45'29"N, 12°13'27"E, 19.7.2012



SW Hundeluft, TK 4040/1/3/3, 51°57'37"N, 12°20'06"E, 25.7.2012



Crepis biennis

W Düben, TK 4040/3/1/4, 51°55'52"N, 12°21'41"E, 19.7.2013



Crepis biennis

NO Waldersee, TK 4139/2/4/3, 51°50'56"N / 12°17'53"E, 21.7.2014



Crepis capillaris

Marke, TK 4239/3/2/4, 51°43'31"N, 12°14'57"E, 13.8.2013



Crepis capillaris

Dessau, Alte Landebahn, TK 4139/3/1/4, 51°49'58"N, 12°12'13"E, 30.7.13



Crepis capillaris

S Haideburg, TK 4239/1/2/4, 51°46'57"N, 12°14'36"E, 6.7.13 114



Crepis foetida

NW Reppichau, TK 4138/3/4/2, 51°49'06"N, 12°04'05"E, 26.6.2014; 28.970 D



Crepis foetida

SW Dessau, TK 4139/3/4/3, 51°48'02"N, 12°12'38"E, 10.7.13



Crepis foetida subsp. *foetida*

Mildensee, TK 4139/4/4/2, 51°48'52"N, 12°19'26"E, 22.07.2015; 29.851 D



Crepis foetida subsp. *foetida* OSO Mildensee, TK 4139/4/4/2, 51°48'52"N, 12°19'26"E, 22.07.2015; 29.851 D



Crepis tectorum

SO Thurland, TK 4239/3/4/4, 51°42'26"N, 12°14'26"E ,17.6.13



Crepis tectorum

N Sollnitz, TK 4239/2/2/4, 51°46'40"N, 12°18'57"E, 13.07.2015; 29.791 D



Hypochaeris glabra

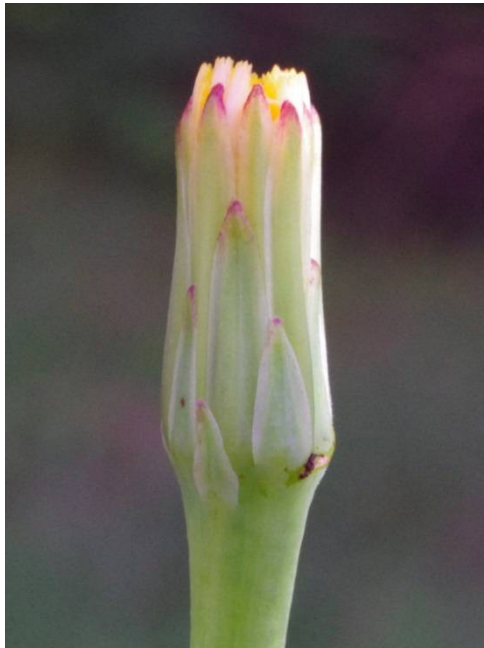


N Mosigkau, TK 4138/4/2/4, 51°50'17"N, 12°09'56"E, 7.9.12



Hypochaeris glabra

SW Haideburg, TK 4239/1/2/3, 51°46'56"N, 12°13'13"E, 17.7.13



Hypochoeris glabra

S Haideburg, TK 4239/1/4/4, 51°45'39"N, 12°14'09"E, 27.8.13



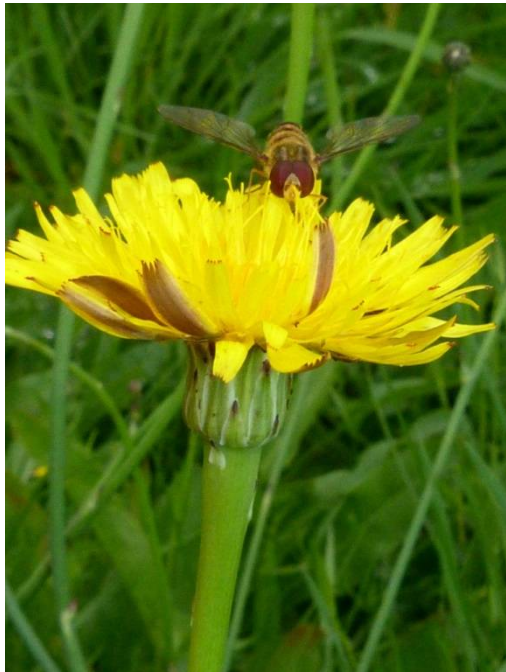
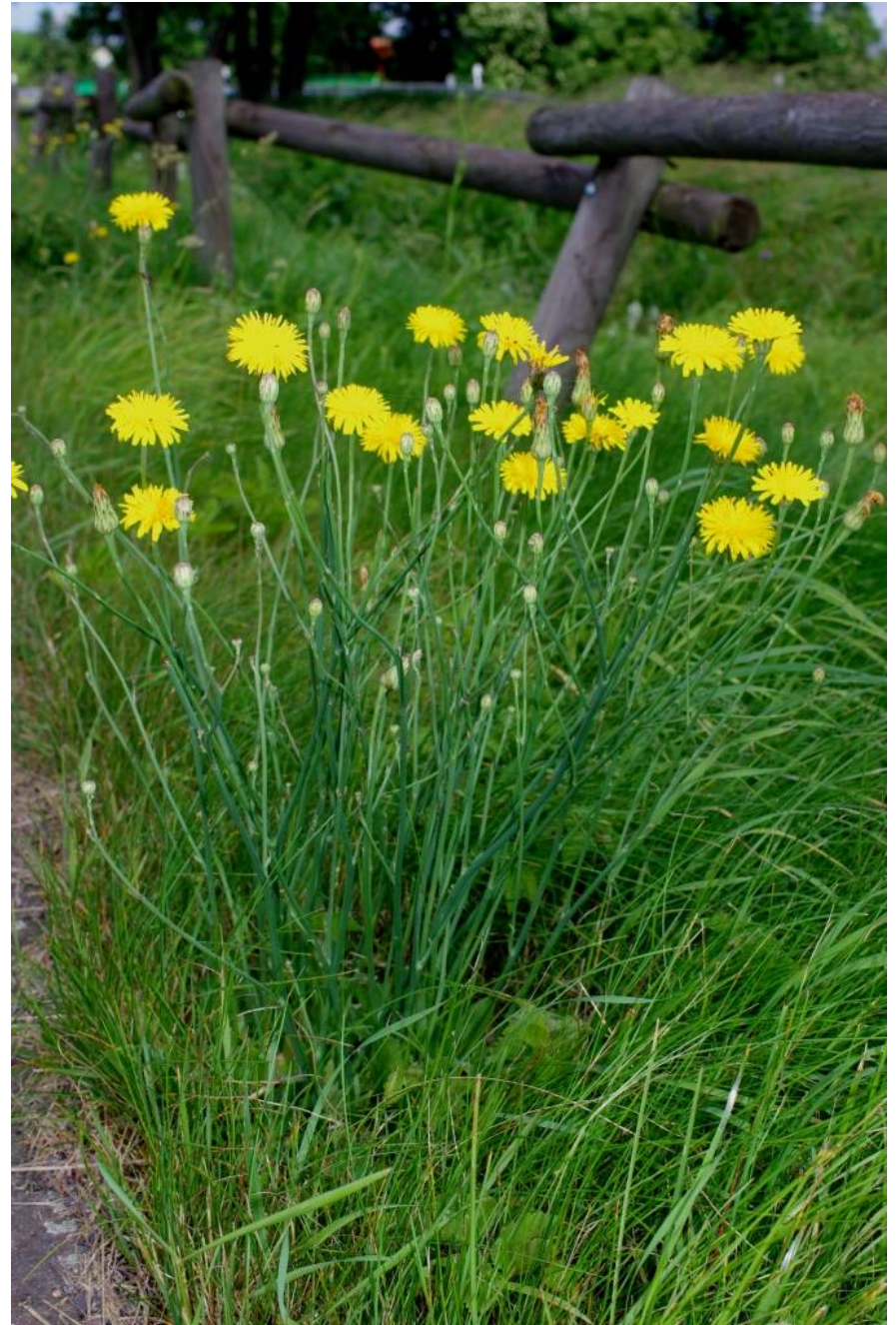
Hypochaeris radicata

Marke, TK 4239/3/2/4, 51°43'31"N, 12°14'57"E, 13.8.13



Hypochaeris radicata

O Roßlau, TK 4139/2/1/3, 51°53'12"N, 12°15'39"E, 24.6.13



Hypochaeris radicata

NO Lingenau, TK 4239/1/4/3, 51°45'15"N, 12°12'58"E, 19.7.2012

SO Mosigkau, TK 4138/4/4/4, 51°48'21"N, 12°09'40"E, 20.6.13



Hypochaeris radicata L.

SO Radis, 4241/312, 51°44'19"N, 12°31'15"E, 16.8.2020



Hypochaeris radicata L.

SO Radis, 4241/312, 51°44'19''N, 12°31'15''E, 16.8.2020