

Epipactis



Griechenland Pflanzen

E. Willing



Orchidaceae – Ophrys 1

Ophrys aesculapii RENZ

Ophrys apifera HUDS.

Ophrys apifera HUDS. var. *bicolor*

Ophrys apifera HUDS. var. *friburgensis*

Ophrys argolica H.FLEISCHM.

Ophrys bombyliflora LINK

Ophrys cretica

Ophrys delphinensis O. & E. DANESCH

Ophrys ferrum-equinum DESF.

Ophrys fuciflora (BURM.FIL.) GREUTER subsp. *fuciflora*

Ophrys fuciflora (BURM.FIL.) GREUTER subsp. *candica*

Ophrys fusca LINK

Ophrys fusca LINK subsp. *iricolor*

Ophrys helenae RENZ

Ophrys insectifera L.

Ophrys iricolor subsp. *iricolor*

Stand: 24.1.2021

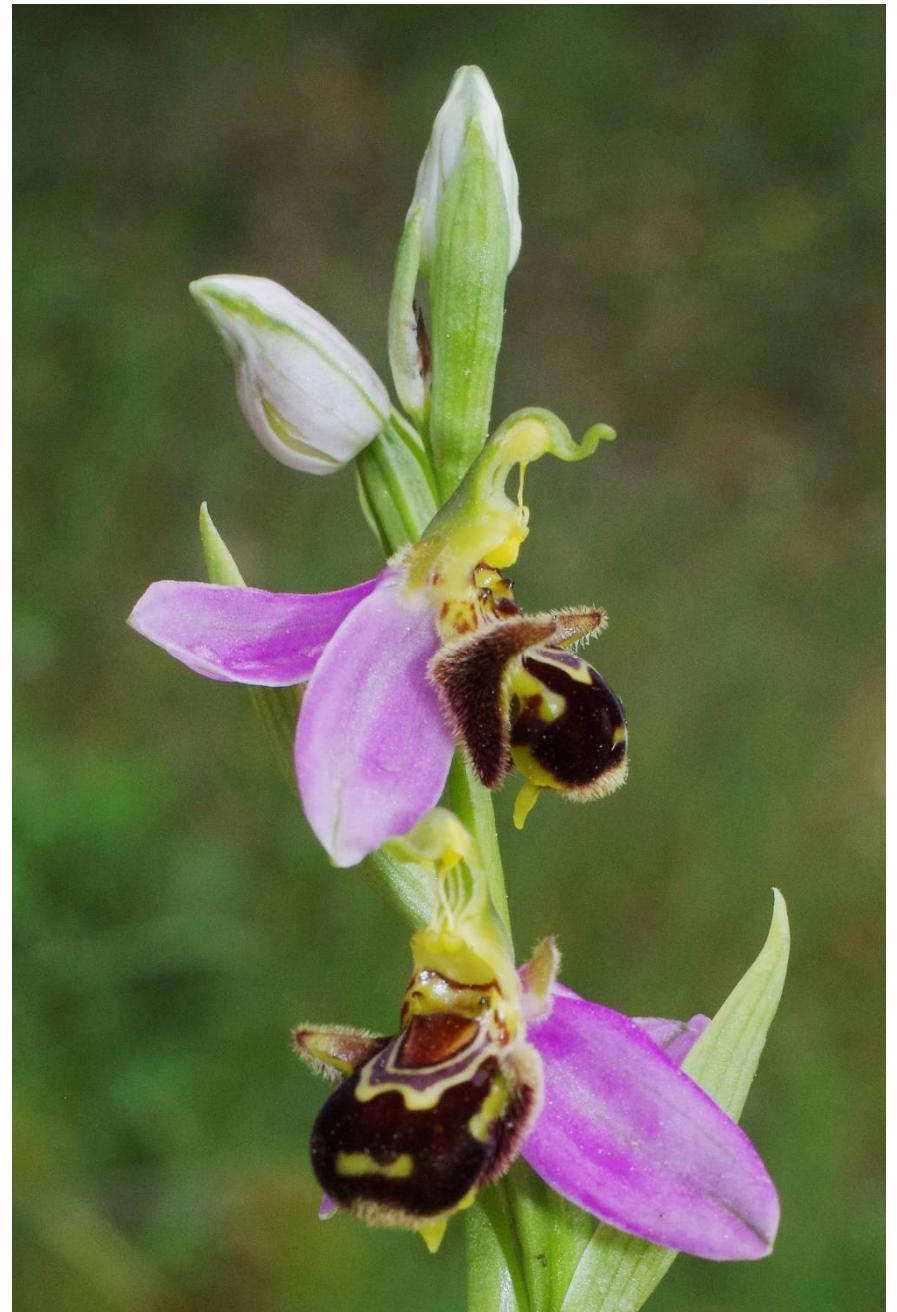


Ophrys aesculapii

Messinia, Vasilikon, 6.4.1978



Ophrys apifera

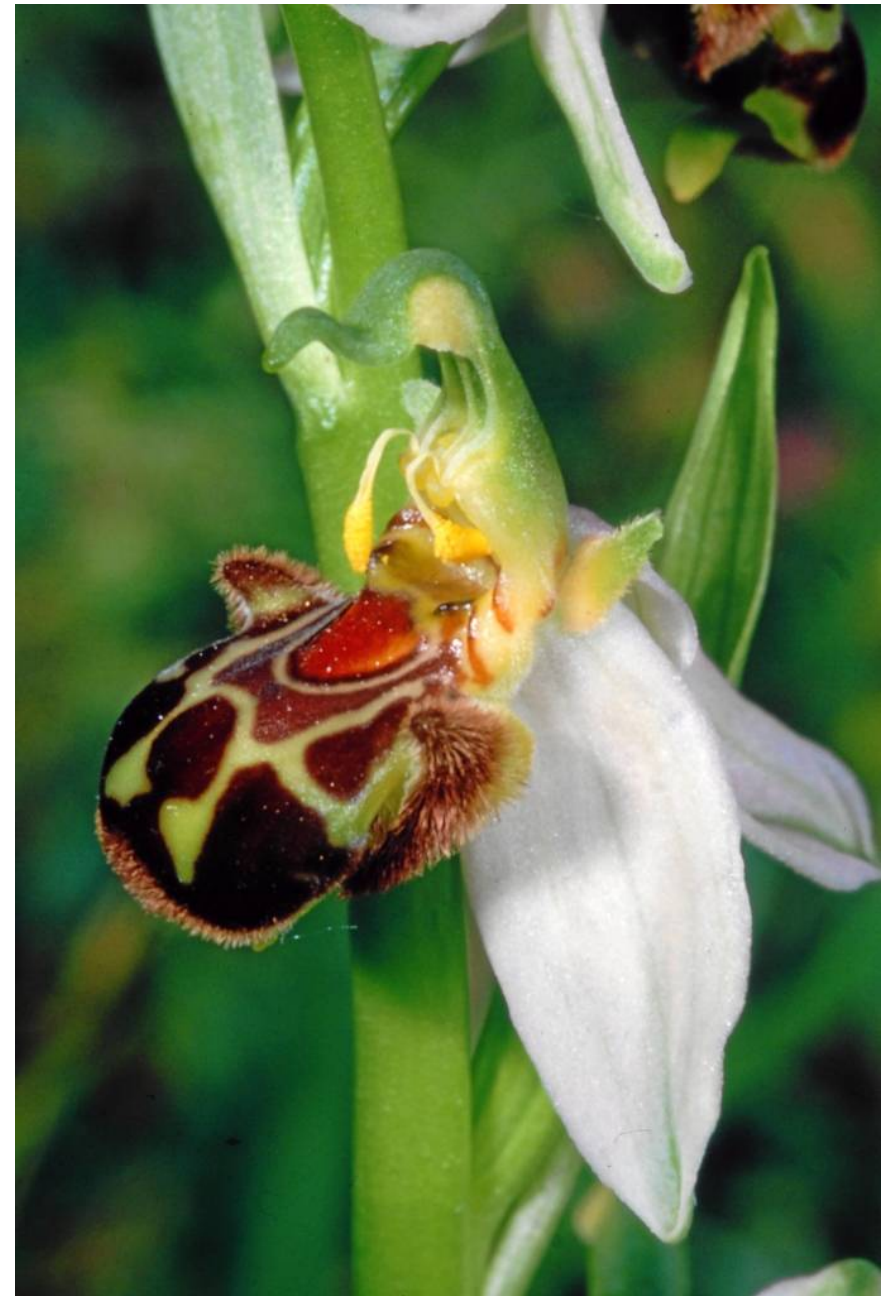


Chalkidiki, ONO Kalandra, 39°58'05"N, 23°25'41"E, 13.05.2019



Ophrys apifera

Lakonia, NNO Agriani, 37°09'55"N, 22°36'03"E, 29.05.2018; 291.938



Ophrys apifera

Korinthia, NO-Hang Dourdouvana, 37°54'50"N, 22°15'05"E, 20.5.1979

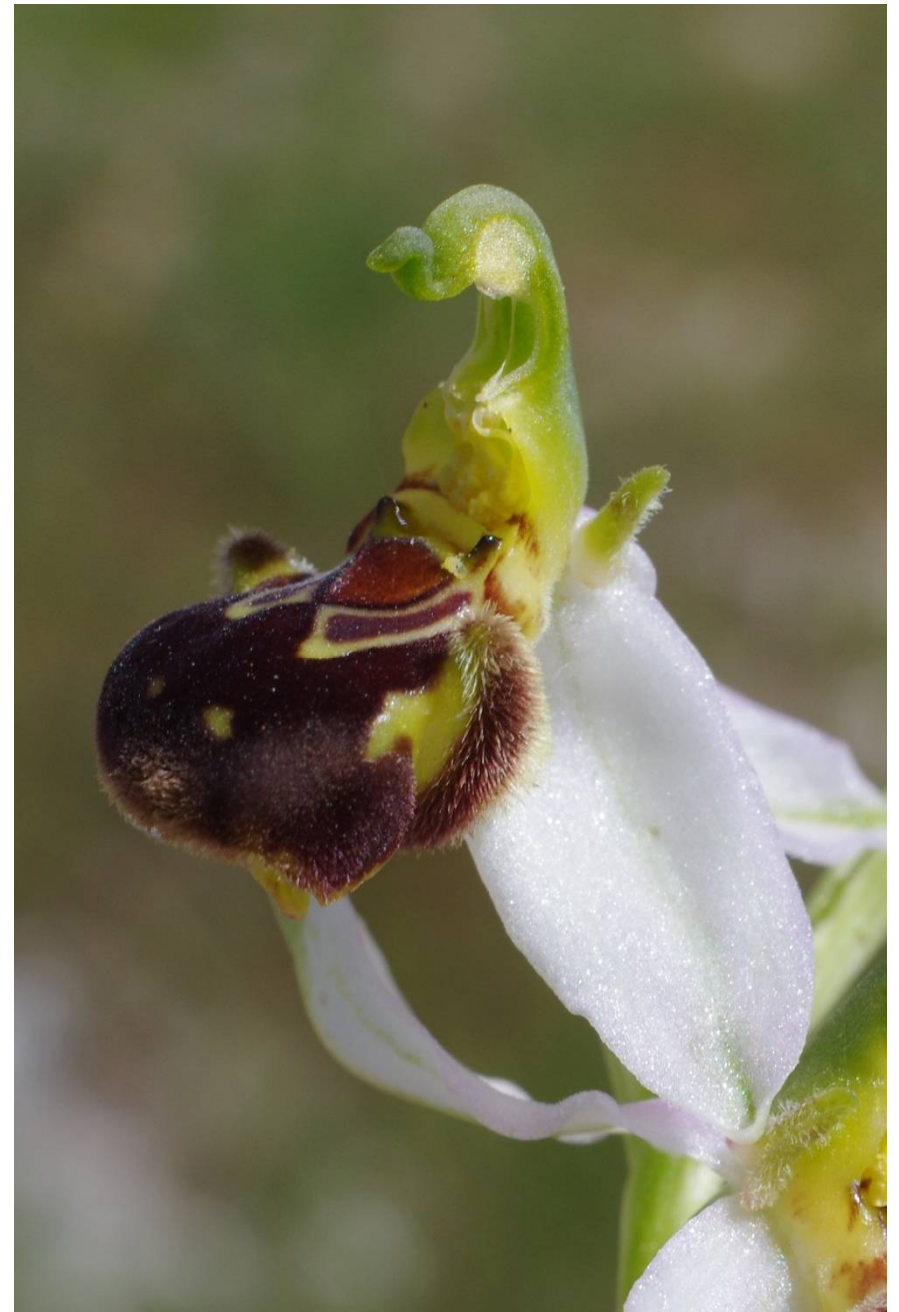


Ophrys apifera HUDS.

Etolia-Akarnania, NO Thermo, 38°36'01"N, 21°42'36"E, 14.5.2013 236.264



Arta, SW Vourgareli, 39°19'57"N, 21°10'05"E, 20.05.2016



Ophrys apifera

Karditsa, SW Mouzaki, 39°23'51"N, 21°36'41"E, 23.05.2016

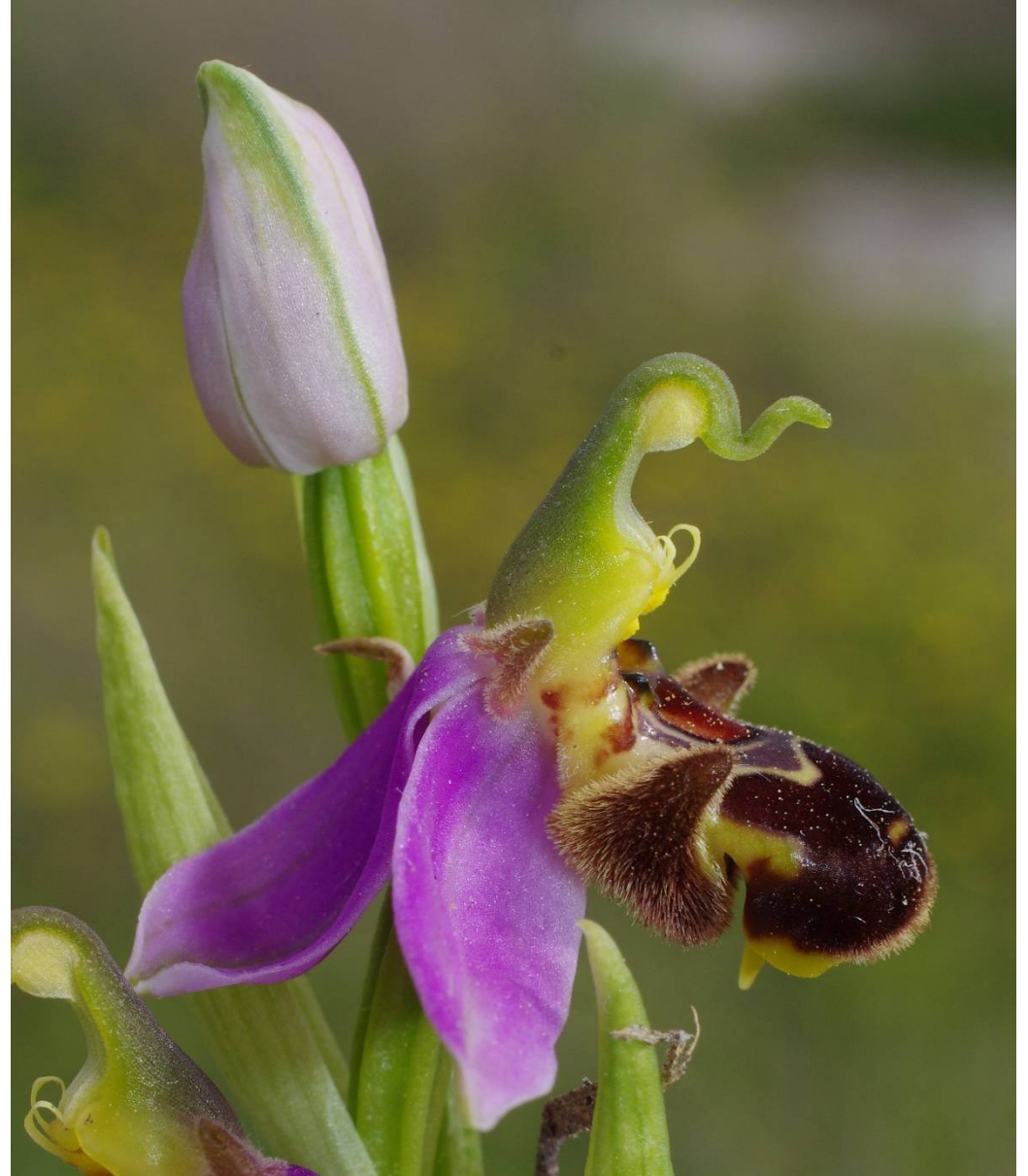


Ophrys apifera

Ioannina, NNW Metsovo, 1385 m, 39°49'03"N, 21°07'29"E, 15.06.2017



Drama, O Paranesti, 41°15'25"N, 24°33'26"E, 24.05.2015; 263.850



Ophrys apifera

Chalkidiki, N Polygyros, 40°24'14"N, 23°25'18"E, 19.05.2019; 299.662



Ophrys apifera

Chalkidiki, SW Paleokastro, 40°25'51"N, 23°24'59"E, 19.05.2019



Ophrys apifera HUDS. var. *bicolor*

Fthiotis, NO Meg.Kapsi, 38°56'07"N, 21°55'23"E, 22.5.1987



Ophrys apifera HUDS. var. *friburgensis*



Ioannina, N Ganadi, 6.6.1978



Ophrys argolica
Messinia, O Militsa, 36°52'52"N, 21°49'49"E, 8.4.1978

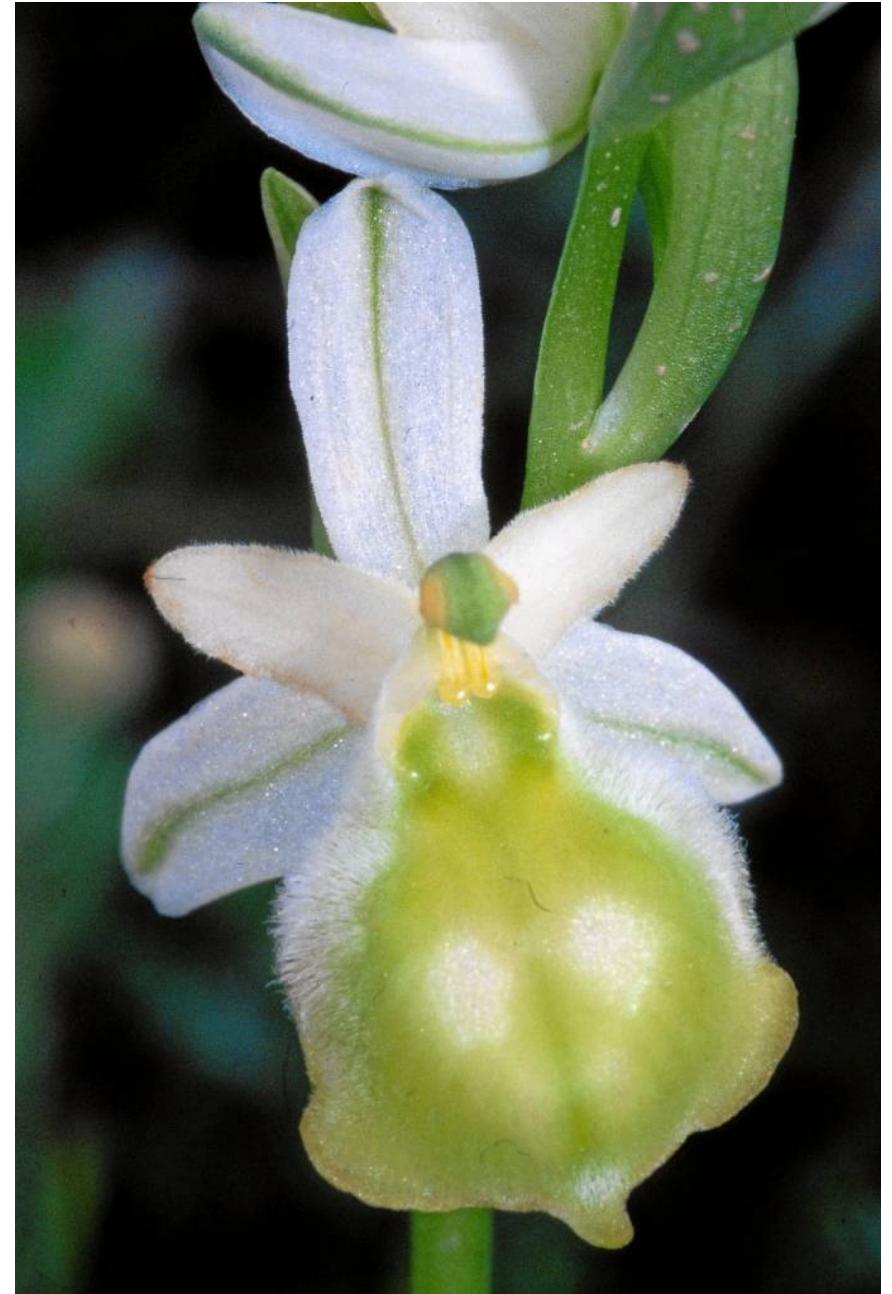


Messinia, SO Melgalas, 37°13'21"N, 21°58'10"E, 6.4.78; 60



Ophrys argolica

Messinia, SO Melgalas, 37°13'21"N, 21°58'10"E, 6.4.78; 60



Lakonia, S Nea Marathea, 36°44'21"N, 22°30'03"E, 12.4.1978



Ophrys argolica

Etolia-Akarnania, S Ano Ag. Vlasios, 38°48'20"N, 21°30'38"E, 29.05.2013; 241.125



Ophrys bombyliflora

Kreta, Lassithi, SO Ziros, 35°03'12"N, 26°10'16"E, 18.04.2017



Ophrys bombyliflora
Kreta, Lassithi, SSO Milatos, 35°17'23"N, 25°34'31"E, 08.04.2017

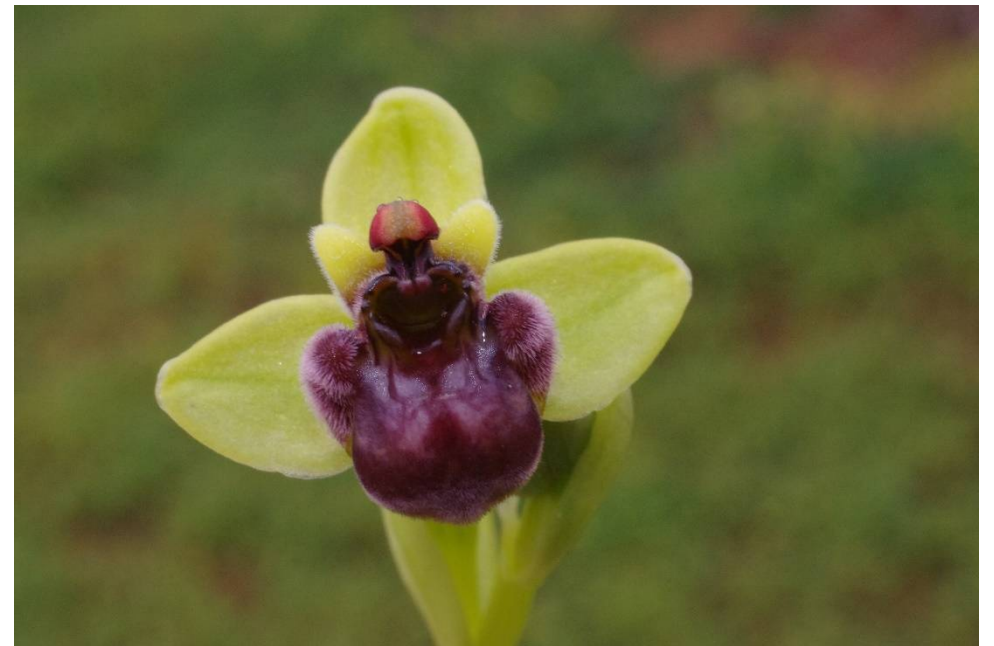


Kreta, Lassithi, SO Ziros, 35°03'12"N, 26°10'16"E, 18.04.2017



Ophrys bombyliflora

Kreta, Lassithi, SSO Milatos, 35°17'23"N, 25°34'31"E, 08.04.2017



Ophrys bombyliflora

Las 062, Kreta, Lassithi, W Kastelli, 35°12'42"N, 25°18'38"E, 13.04.2017



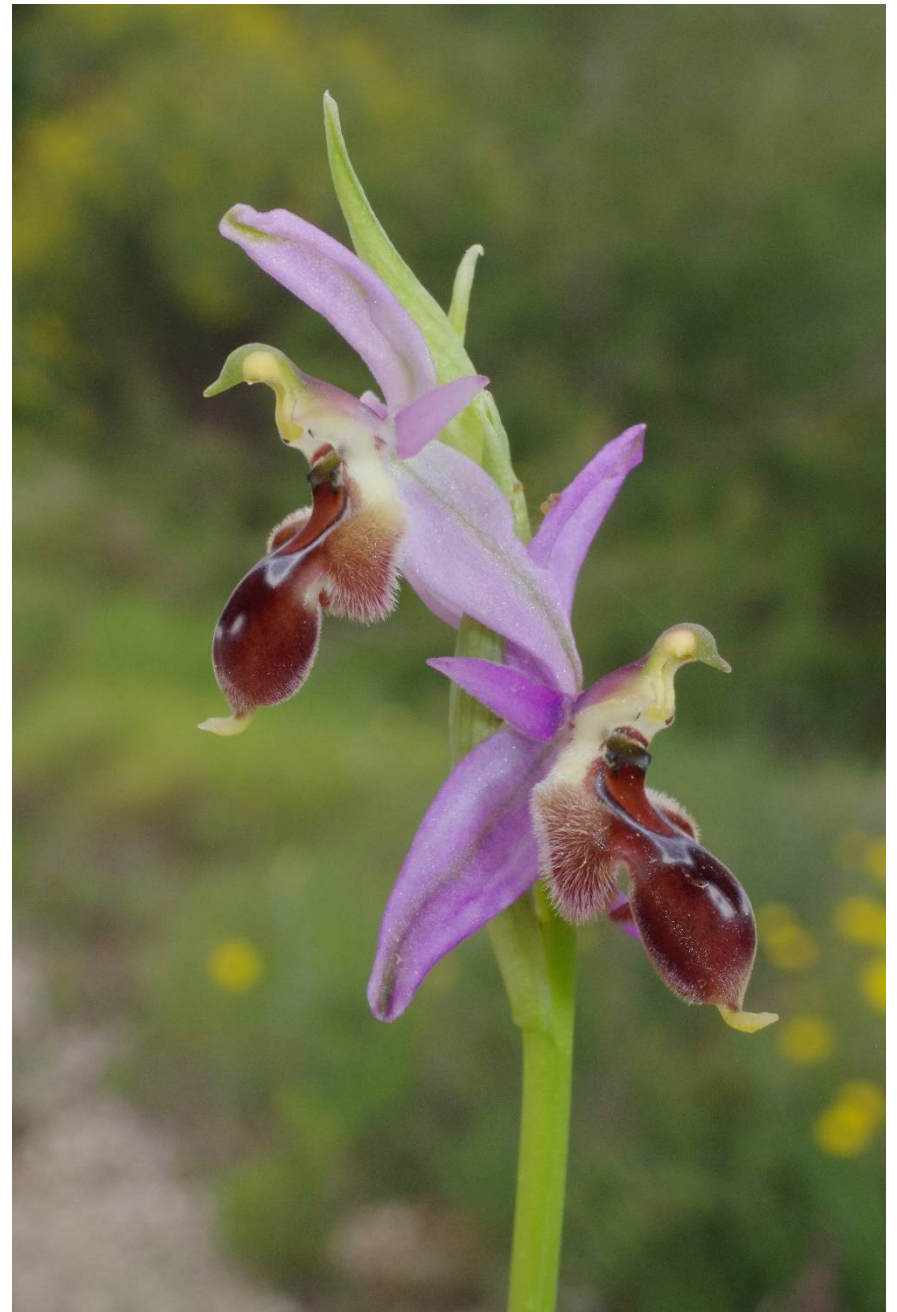
Ophrys cretica

Kreta, Lassithi, OSO Neapoli, 35°15'12"N, 25°38'07"E, 12.04.2017



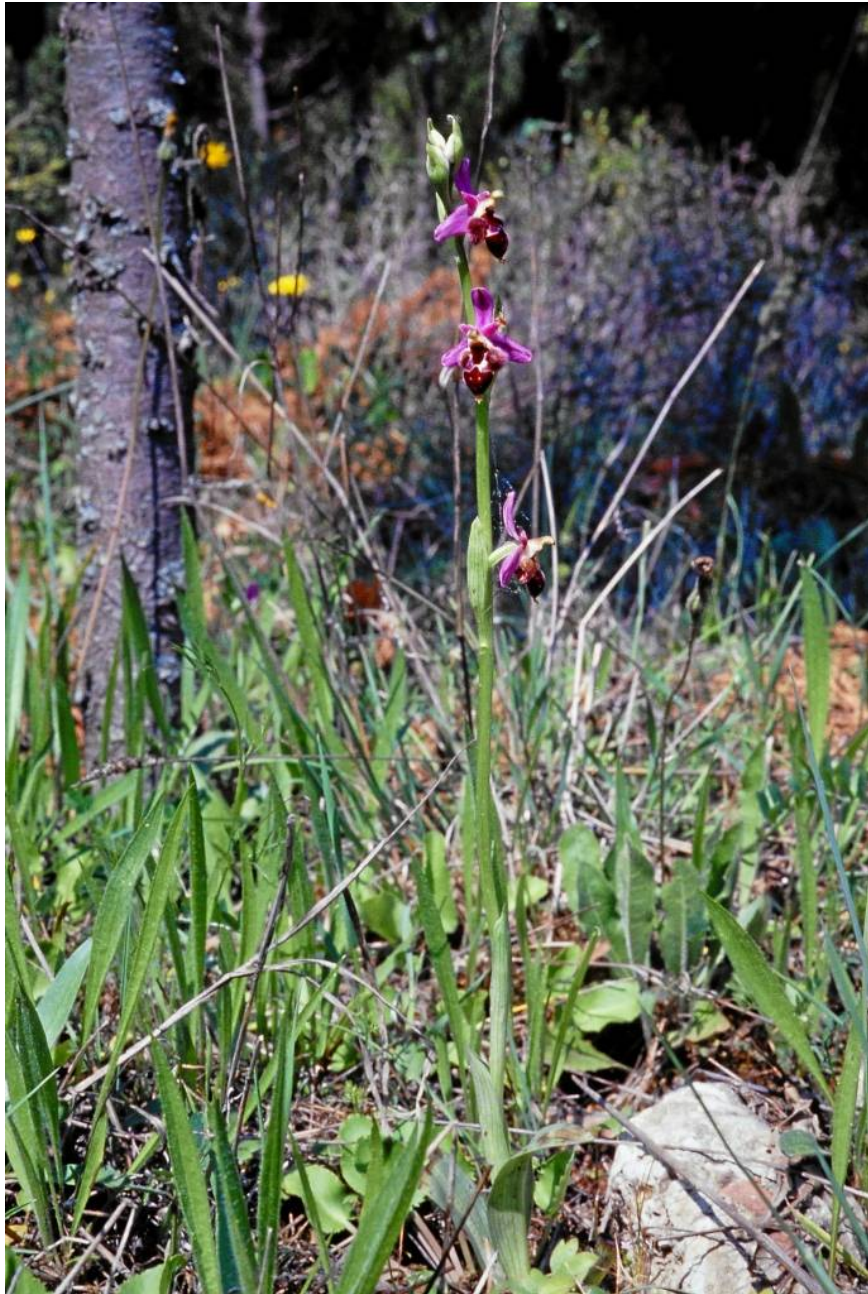
Ophrys cretica

Kreta, Lassithi, Amygdali, 35°12'30"N, 25°35'50"E, 11.04.2017; 275.618



Ophrys delphinensis

Ahaia, SW Akrotas, 38°07'34"N, 22°17'18"E, 30.04.2018; 285.091



Ophrys delphinensis Ahaia, S Trapeza, 38°10'00"N, 22°13'17"E, 24.4.1978



Ophrys delphinensis

Ahaia, Ege, 38°06'40"N, 22°21'27"E, 25.4.1978

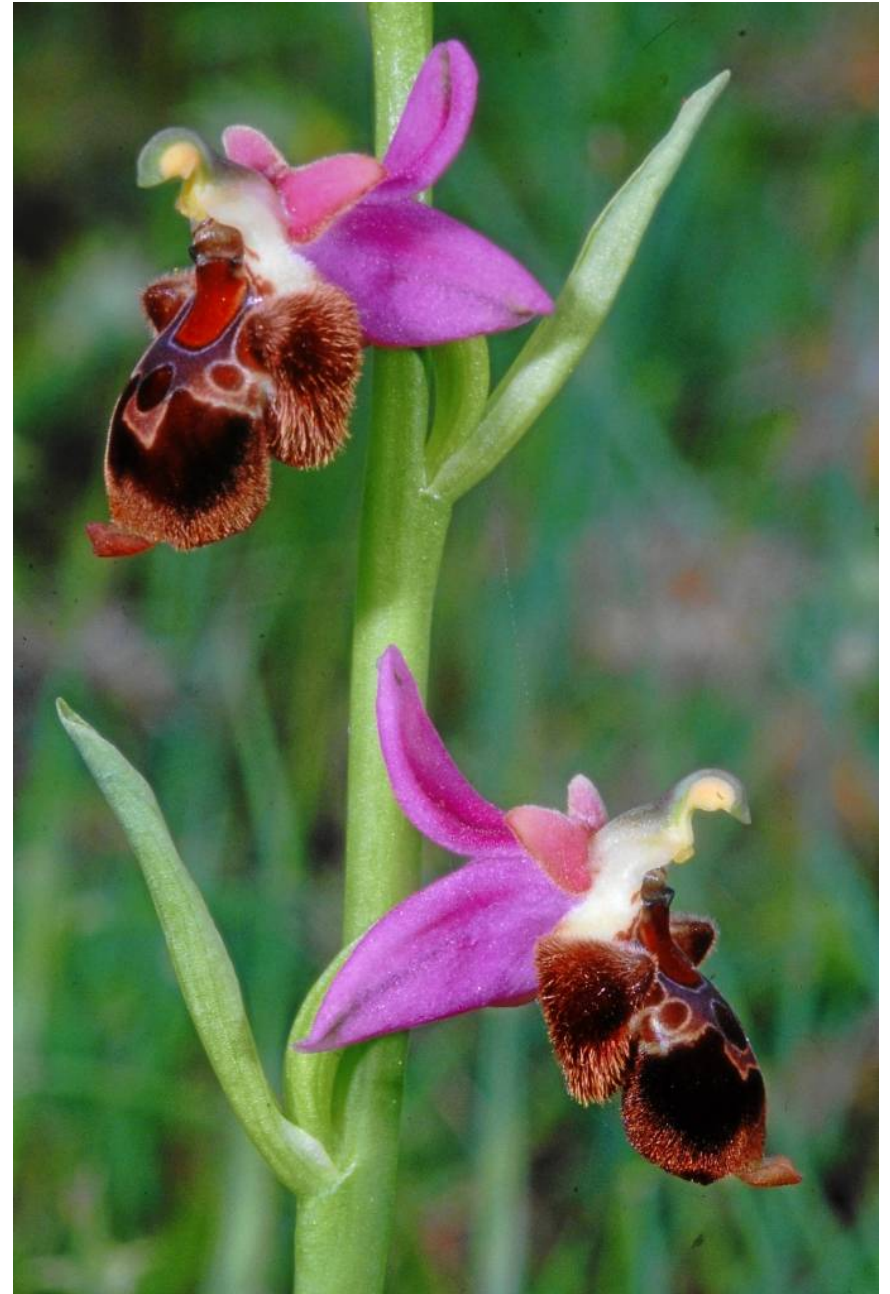


Ahaia, N Katholikon, 38°08'55"N, 22°12'35"E, 24.4.1978 125



Ophrys delphinensis

Ahaia, N Katholikon, 38°08'55"N, 22°12'35"E, 24.4.1978 125

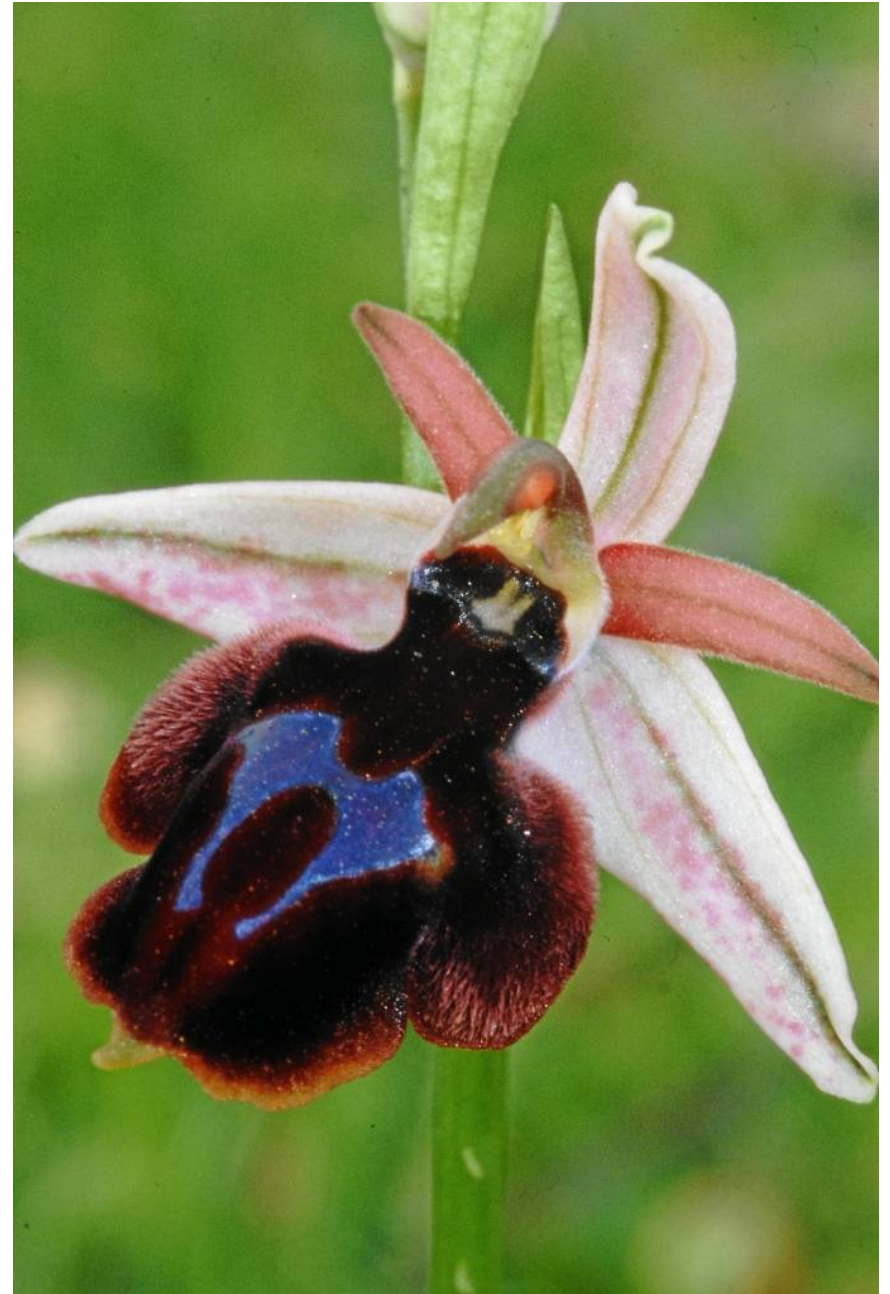


Fthiotis, S Skamnos, 38°44'27"N, 22°26'18"E, 25.5.1987 2.536



Ophrys ferrum-equinum

Lefkas, NO Lazarata, 38°47'07"N, 20°40'39"E, 28.4.1982 732



Arta, N Megarhi, 39°07'41"N, 21°02'47"E, 18.4.1983 919



Ophrys ferrum-equinum

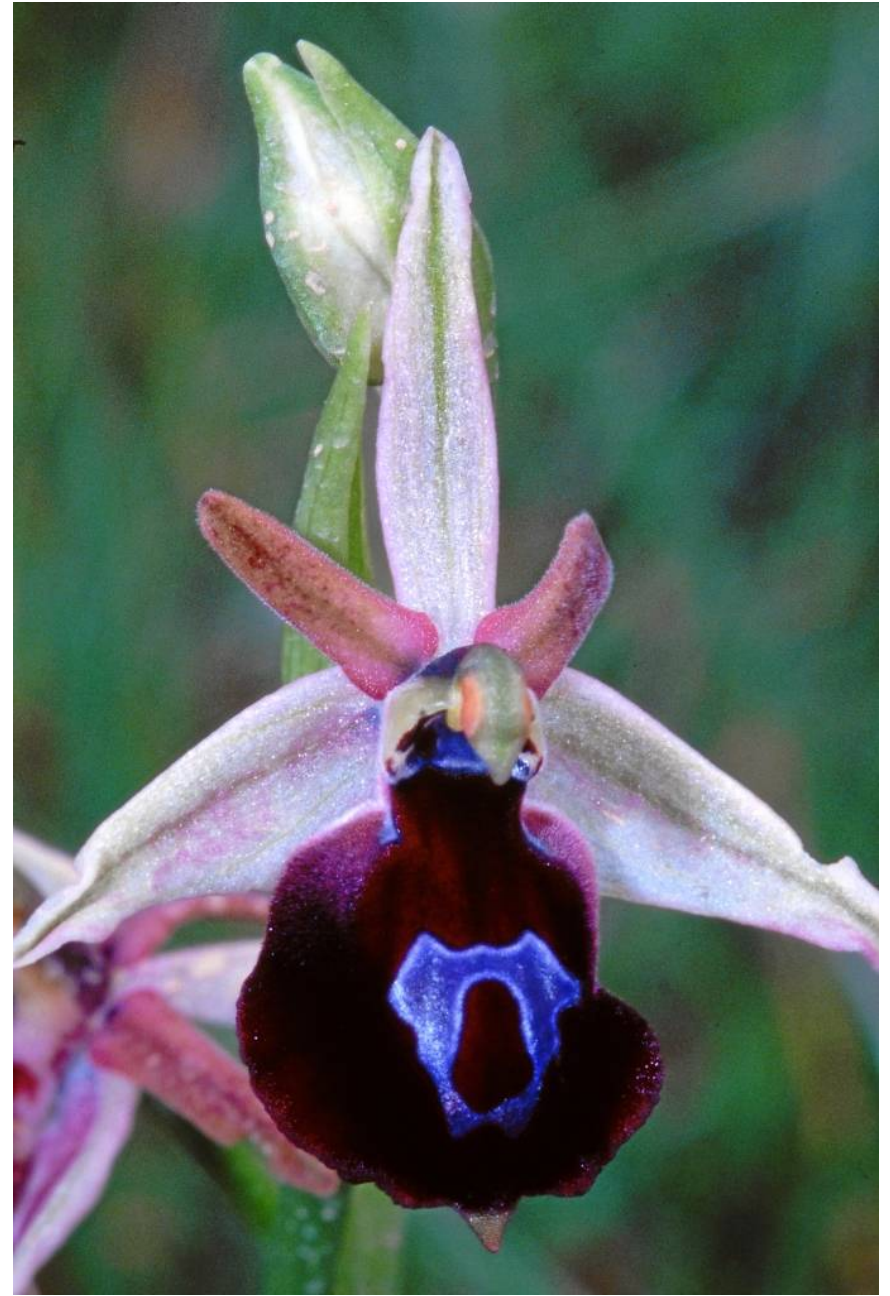
Messinia, N Militsa, 36°52'52"N, 21°49'49"E, 8.4.1978



Kerkyra, S Vouniatades, 39°30'37"N, 19°52'18"E, 6.5.1986



Ophrys ferrum-equinum



Messinia, N Militsa, 36°52'52"N, 21°49'49"E, 8.4.1978



Ophrys ferrum-equinum

Kozanis, SW Eani, 40°07'20"N, 21°46'28"E, 26.04.2019 oder 428?



Ophrys fuciflora subsp. *candica*



Lakonia, SW Jithion, 36°43'48"N, 22°30'43"E, 13.4.1978



Ophrys fuciflora subsp. *fuciflora*

Lakonia, SW Jithion, 36°43'48"N, 22°30'43"E, 13.4.1978

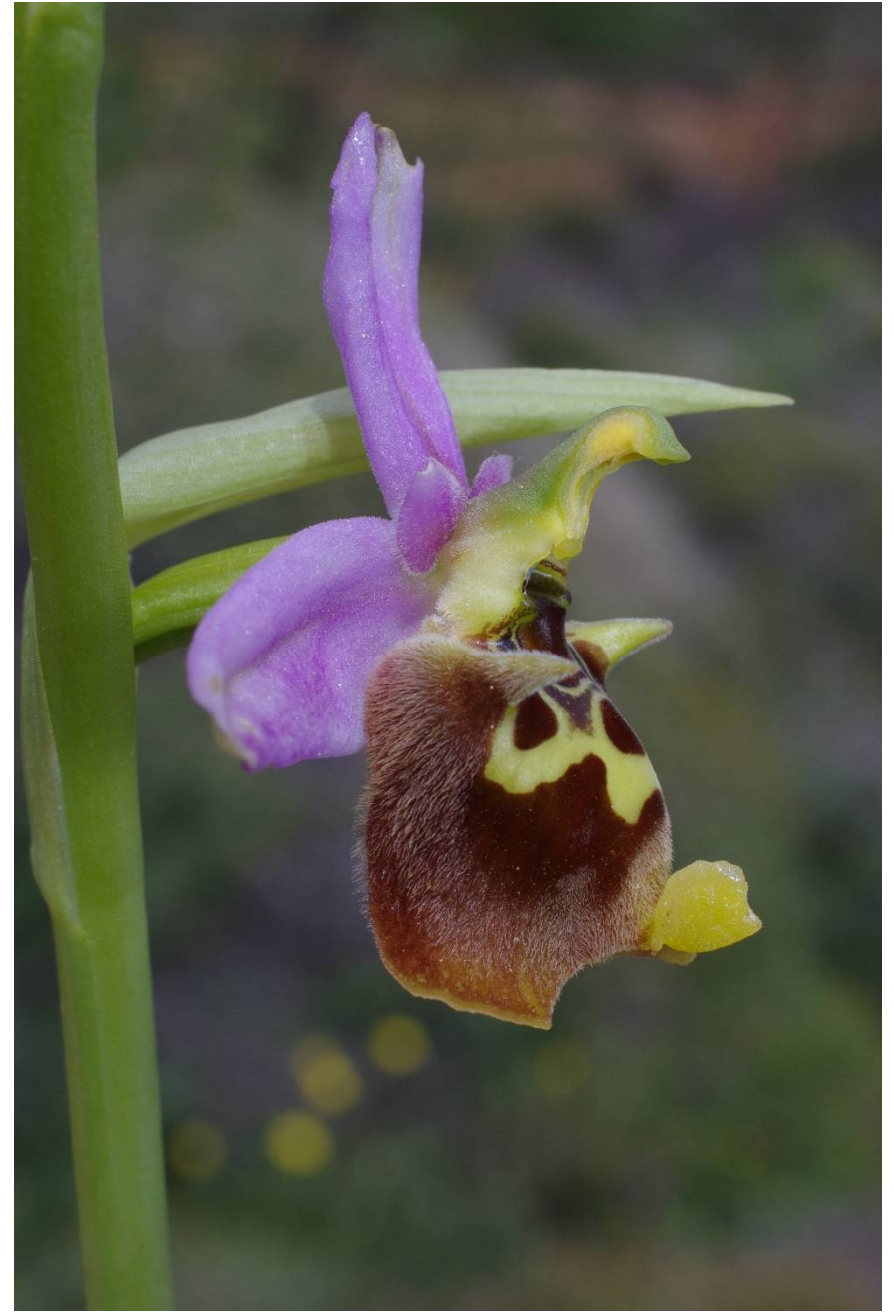


Lakonia, S Nea Marathea, 36°44'21"N, 22°30'03"E, 13.4.1978 501



Ophrys fuciflora subsp. *fuciflora*

Lassithi, N Koutsounari, 35°01'52"N, 25°50'18"E, 19.04.2017; 275.948



Ophrys fuciflora subsp. *fuciflora*

Lassithi, SO Ziros, 35°03'12"N, 26°10'16"E, 18.04.2017



Ophrys fuciflora subsp. *fuciflora*



Lassithi, Moni Toplou, 35°14'35"N, 26°14'55"E, 15.04.2017; 275.795



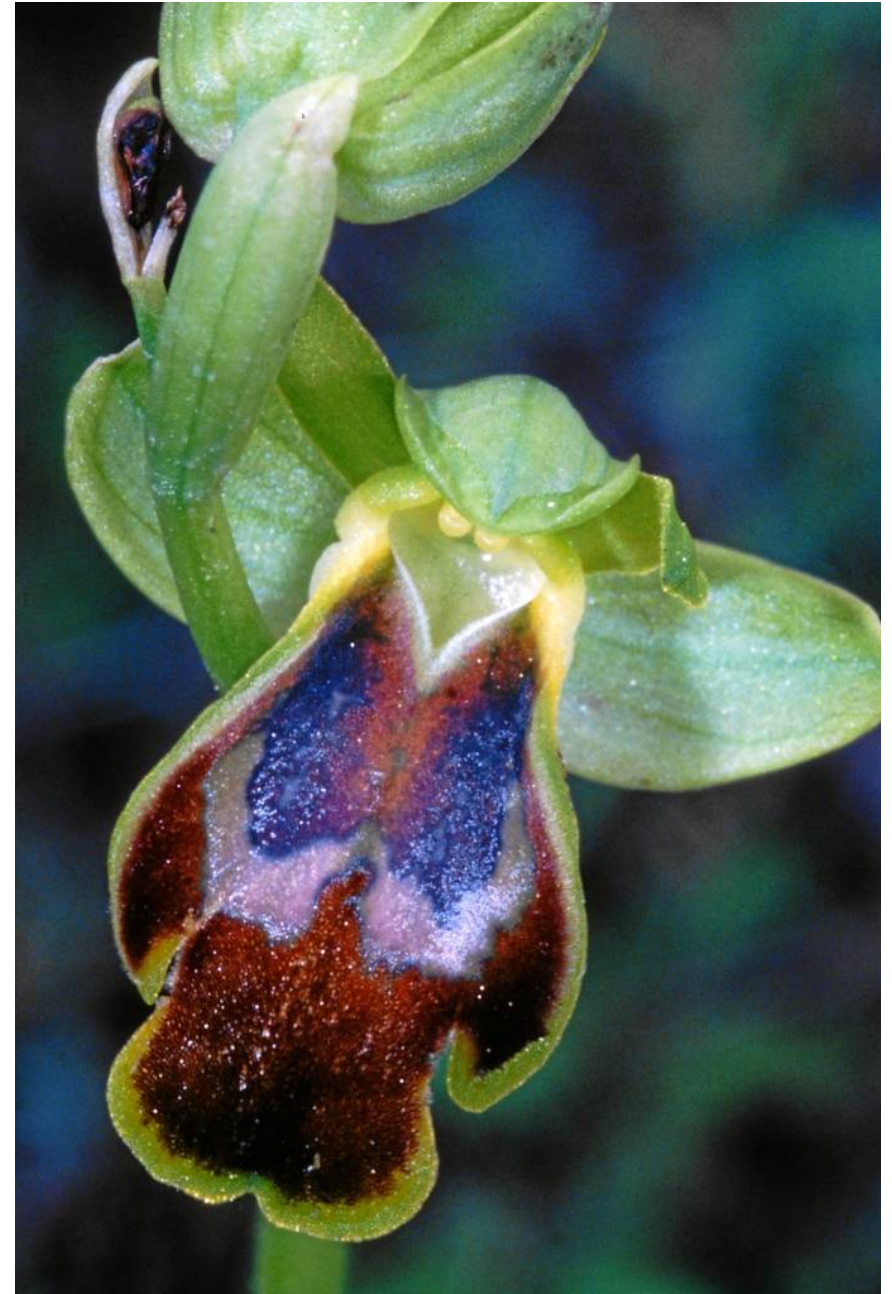
Ophrys fusca subsp. *fusca*

Las 045, Kreta, Lassithi, OSO Neapoli, 35°15'12"N, 25°38'07"E, 12.04.2017; 275.640



Ophrys fusca

Lefkas, O Platistoma, 38°44'25"N, 20°41'22"E, 16.5.1987



Korinthia, O Nemea, 37°48'34"N, 22°40'12"E, 23.4.1978 121



Ophrys fusca

Ahaia, N Seliana, 38°03'25"N, 22°20'42"E, 25.4.1979



Korinthia, O Nemea, 37°48'34"N, 22°40'12"E, 23.4.1978



Ophrys fusca subsp. *iricolor*

Lassithi, W Armeni, 35°04'28"N, 26°05'02"E, 17.04.2017; 275.863



Ophrys fusca subsp. *iricolor* ; Lassithi, W Armeni, 35°04'28"N, 26°05'02"E, 17.04.2017



Ophrys fusca subsp. *iricolor*

Las 116, Kreta, Lassithi, Orino, 35°04'59"N, 25°54'38"E, 19.04.2017; 275.966



Ophrys fusca subsp. *iricolor*

Kreta, Lassithi, SW Kalamafka, 35°04'13"N, 25°39'16"E, 20.04.2017



Ophrys helenae

Preveza, SO Skepasi, 39°10'39"N, 20°38'36"E, 23.04.2016 266.996



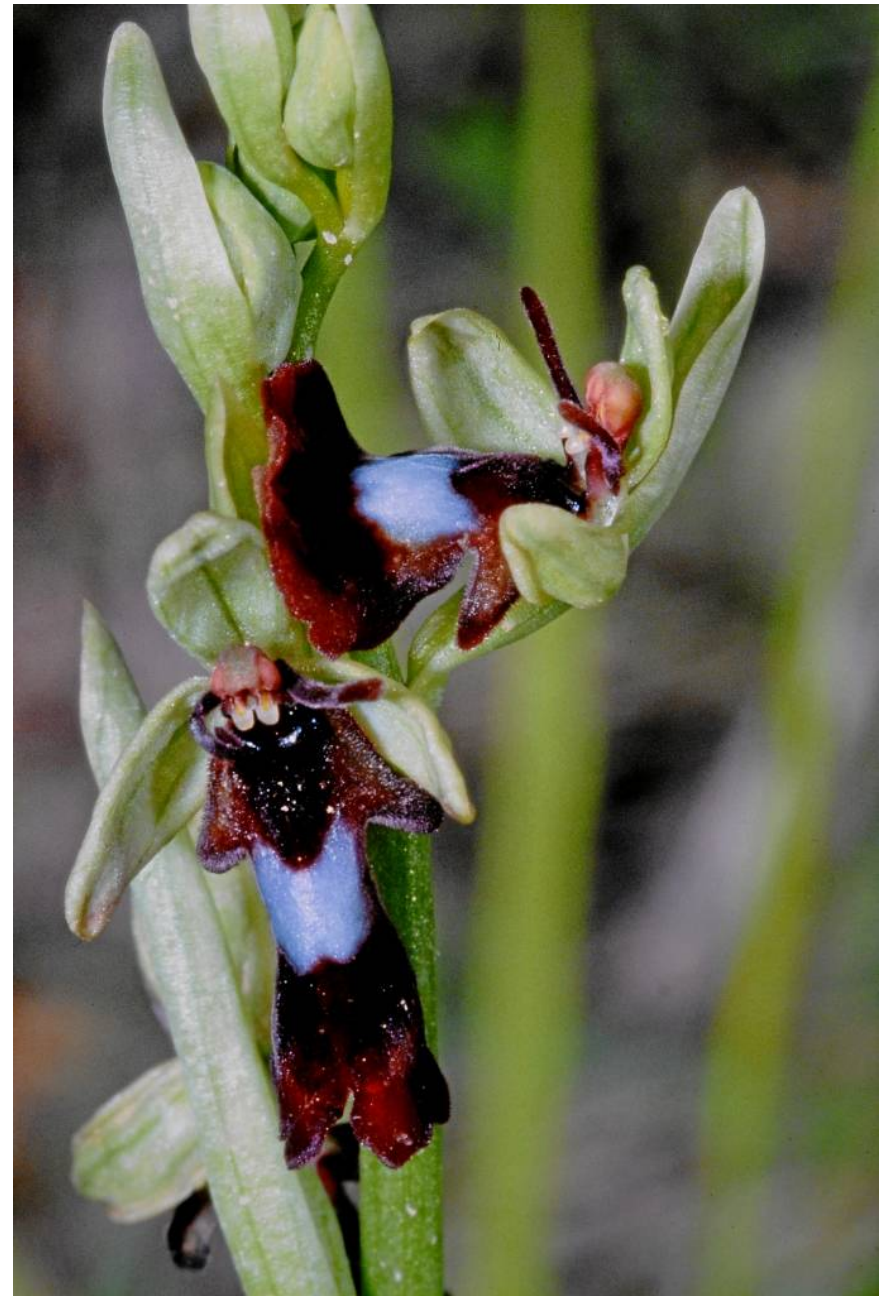
Ophrys helenae

Ioannina, NW Platanoussa, 39°25'32"N, 21°00'42"E, 23.4.1983



Ophrys insectifera

Etolia-Akarnania, S Karamaneika, 38°49'47"N, 21°31'06"E, 7.5.1982; 811



Ioannina, S Delvinaki, 39°53'34"N, 20°27'43"E, 7.5.1985; 1.646



Ophrys lutea subsp. *galilaea*

Messinia, Kumaron, 37°02'04"N, 21°47'54"E, 7.4.1978

Ophrys ferrum-equinum